

LUMBER PATTERN DATA SHEET

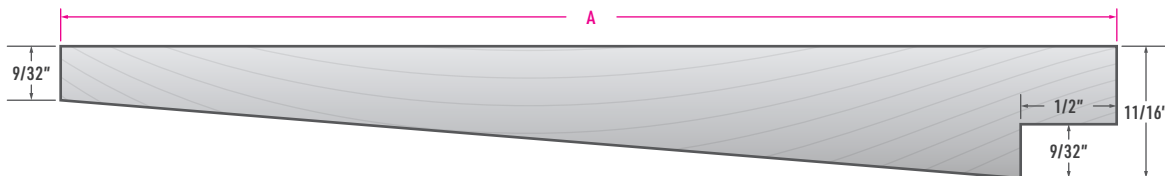
DOLLY VARDEN LUMBER PATTERNS | v1.0



LUMBER PROFILE 3/4" RABBETED BEVEL SIDING (S1S2E)

FIND THIS PATTERN IN OUR LUMBER PATTERN BOOK ON PAGE 22

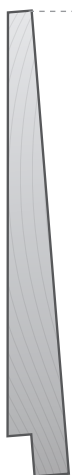
» NOTE: Dimensioned pattern drawings are drawn to scale and presented at 100% unless otherwise indicated.



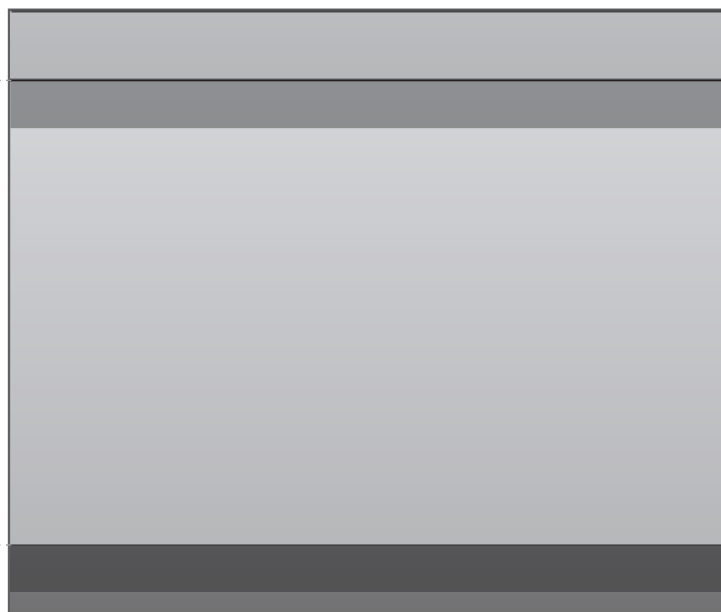
SCAN HERE

Get a digital copy of our *Lumber Pattern Book* by scanning the QR Code or by visiting our website at: westernwoodsinc.com

PROFILE VIEW



INSTALLED VIEW



SIZE OPTIONS

NOMINAL SIZE	PATTERN NO.	A	B	CONVERSION FACTOR
3/4 x 6	371	5 1/2"	-	1.17
3/4 x 8	372	7 1/4"	-	1.17
3/4 x 10	373	9 1/4"	-	1.13

DISCLAIMER: The dimensions of the delivered product is subject to change due moisture variations experienced by the product during the drying process, storage, or transportation. Site environmental conditions also apply. See page 36 for additional information. Milling variations apply. Consult your local building code for tolerances and specifics.

LUMBER PATTERN DATA SHEET

DOLLY VARDEN LUMBER PATTERNS | v1.0

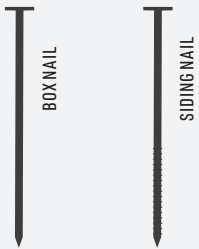
ALIGNMENTS

- ✓ Horizontal
- ✗ Vertical

NOMINAL SIZES

STANDARD DOLLY VARDEN	THICK DOLLY VARDEN
3/4 x 6	1 x 6
3/4 x 8	1 x 8
3/4 x 10	1 x 10
	1 x 12

NAIL TYPES



- B** BOX NAIL - Wide head flat, smooth shaft.
- S** SIDING NAIL - Wide flat head, ribbed shaft.

! WARNING: Do not nail through any of the over-lapping pieces.

DESCRIPTION

Dolly Varden Patterns are thicker than Bevel and feature a rabbeted [knotched] lower edge. They can be surfaced smooth or saw-textured. These patterns provide a traditional-style appearance. Allow for a 1/2" over-lap [C] and allow for an approximate 1/8" gap when installing patterns 8" and wider [B].

NAILING PATTERNS

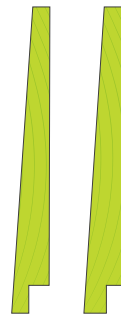
FIND THIS PATTERN IN OUR LUMBER PATTERN BOOK STARTING ON PAGE 20

LEGEND

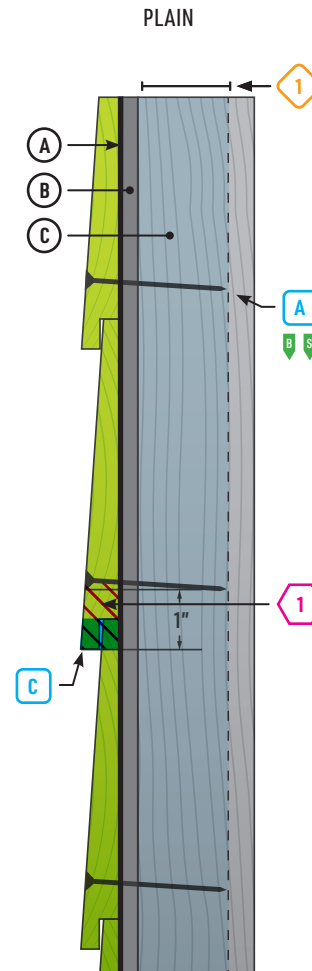
- 1** NAILS MUST PENETRATE 1 1/2" INTO SOLID WOOD.
- A** ONE SIDING OR BOX NAILS. ONE PER BEARING, PLACE 1" FROM BOTTOM EDGE.
- B** 1/8" = GAP FOR EXPANSION
- C** 1/2" = LENGTH OF RABBET (OVERLAP).
- 1** POSITION LOWER NAIL 1" FROM THE BOTTOM.
- A** HOUSE WRAP
- B** SHEATHING
- C** STUD
- SIDING
- NAIL DEPTH
- NAIL

PROFILE VIEW

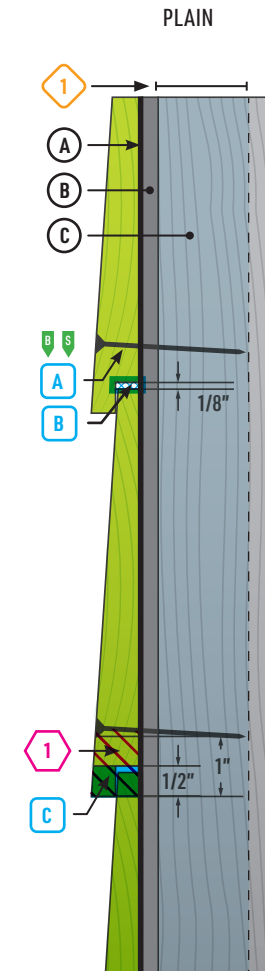
A profile view of the pattern before installation. [Dolly Varden - left; Dolly Varden [Thick] - right]



NAILING PATTERNS 6" AND NARROWER



NAILING PATTERNS 8" AND WIDER



CONTENT SOURCE INSTALLATION RECOMMENDATIONS & NAILING PATTERNS PROVIDED BY WWPA.