

# LUMBER PATTERN DATA SHEET

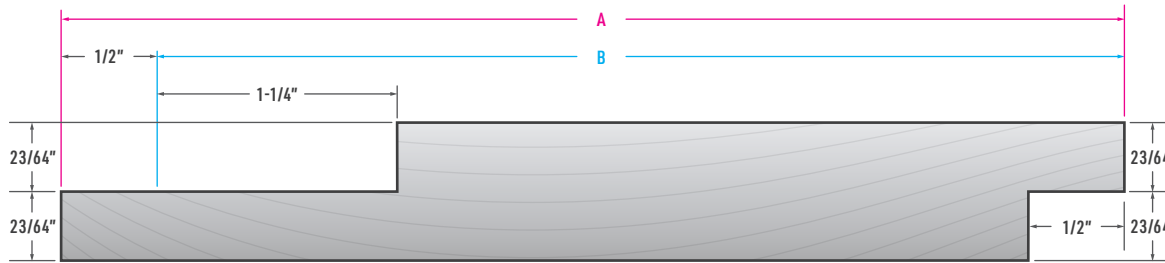
SHIPLAP LUMBER PATTERNS | V1.0



## LUMBER PROFILE 1" CHANNEL RUSTIC SIDING

FIND THIS PATTERN IN OUR LUMBER PATTERN BOOK ON PAGE 16

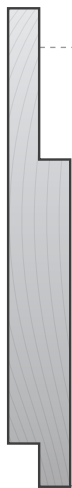
» NOTE: Dimensioned pattern drawings are drawn to scale and presented at 100% unless otherwise indicated.



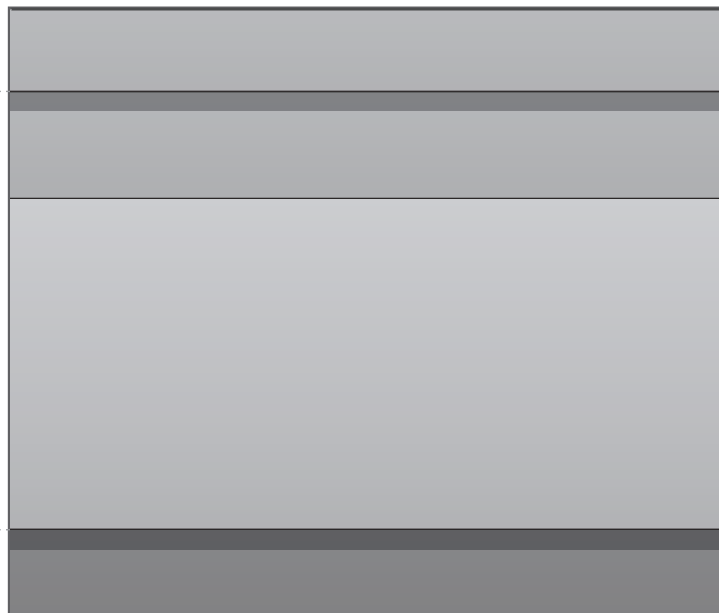
SCAN HERE

Get a digital copy of our *Lumber Pattern Book* by scanning the QR Code or by visiting our website at: [westernwoodsinc.com](http://westernwoodsinc.com)

### PROFILE VIEW



### INSTALLED VIEW



### SIZE OPTIONS

NOMINAL SIZE	PATTERN NO.	A	B	CONVERSION FACTOR
1 x 6	-	5 3/8"	4 1/8"	1.17
1 x 8	-	7 1/8"	5 7/8"	1.16
1 x 10	-	9 1/8"	7 7/8"	1.13
1 x 12	-	11 1/8"	9 7/8"	1.13

**DISCLAIMER:** The dimensions of the delivered product is subject to change due moisture variations experienced by the product during the drying process, storage, or transportation. Site environmental conditions also apply. See page 36 for additional information. Milling variations apply. Consult your local building code for tolerances and specifics.

# LUMBER PATTERN DATA SHEET

CHANNEL RUSTIC LUMBER PATTERNS | v1.0

## ALIGNMENTS

- ✓ Horizontal
- ✓ Vertical

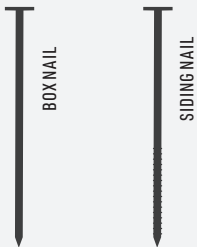
## NOMINAL SIZES

3/4 x 6

3/4 x 8

3/4 x 10

## NAIL TYPES



**B** BOX NAIL - Wide head flat, smooth shaft.

**S** SIDING NAIL - Wide flat head, ribbed shaft.

**! WARNING:** Do not nail through any of the over-lapping pieces.

## DESCRIPTION

Channel Rustic Patterns feature a 1/2" overlap (rabbet, C), including an approximate 1/8" gap (B) and a 1" to 1 1/4" channel when installed. This allows for a maximum dimensional change without adversely affecting appearance in climates of highly variable moisture. Available in both smooth or saw-textured surface options.

FIND THIS PATTERN IN OUR LUMBER PATTERN BOOK STARTING ON PAGE 16

## NAILING PATTERNS

### NAILING PATTERNS 6" AND NARROWER

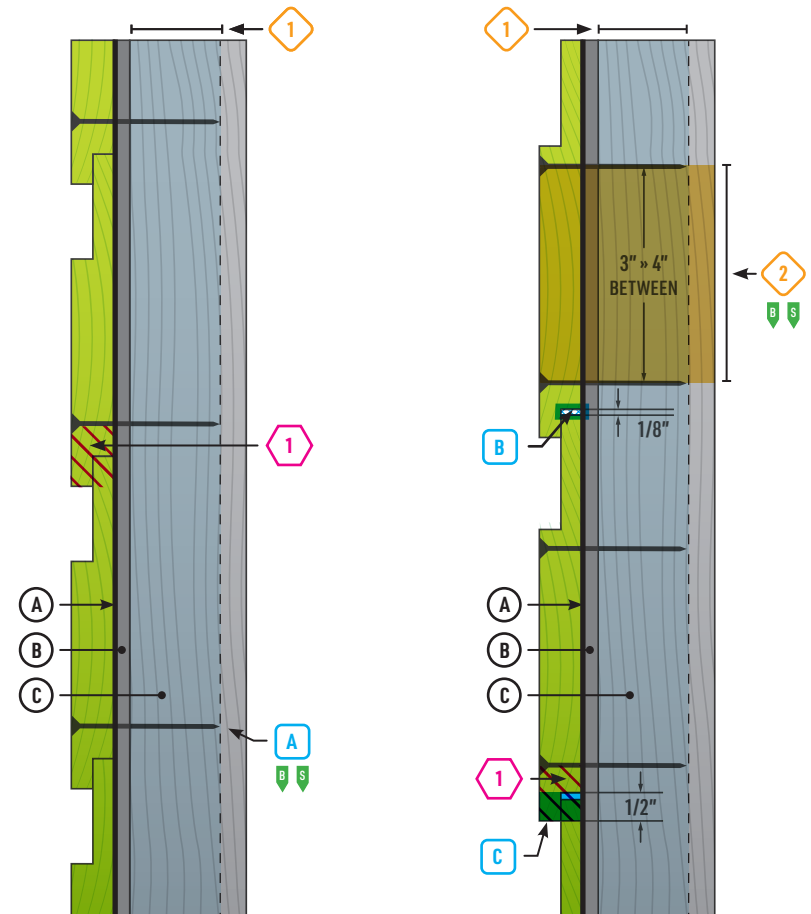
### NAILING PATTERNS 8" AND WIDER

## LEGEND

- 1** NAILS MUST PENETRATE 1 1/2" INTO SOLID WOOD.
- 2** USE TWO SIDING OR BOX NAILS PER BEARING 3 - 4" APART.
- A** USE ONE SIDING OR BOX NAILS PER BEARING.
- B** 1/8" = GAP FOR EXPANSION
- C** 1/2" = LENGTH OF RABBET (OVERLAP).
- 1** POSITION LOWER NAIL 1" FROM THE BOTTOM.
- A** HOUSE WRAP
- B** SHEATHING
- C** STUD
- SIDING
- NAIL DEPTH
- NAIL

## PROFILE VIEW

A profile view of the pattern before installation.



CONTENT SOURCE INSTALLATION RECOMMENDATIONS & NAILING PATTERNS PROVIDED BY WWPA.