

LUMBER PATTERN DATA SHEET

TONGUE & GROOVE LUMBER PATTERNS | V1.0

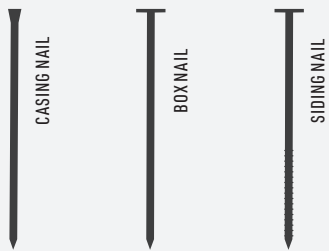
ALIGNMENTS

- ✓ Horizontal
 - ✓ Vertical
- Place tongued edge **UP** in horizontal applications.

NOMINAL SIZES

- | | |
|--------|---|
| 1 x 4 | <p>NOTE: T&G Patterns may be ordered with 1/4", 3/8", or 7/8" tongues. For wider widths, specify the longer tongue and pattern at the time of order.</p> |
| 1 x 6 | |
| 1 x 8 | |
| 1 x 10 | |
| 1 x 12 | |

NAIL TYPES



- C CASING NAIL** - Small tapered head; smooth shaft.
- B BOX NAIL** - Wide head flat, smooth shaft.
- S SIDING NAIL** - Wide flat head, ribbed shaft.

! WARNING: Do not nail through any of the over-lapping pieces.

DESCRIPTION

Tongue & Groove ('T&G') Patterns are available in a variety of patterns. T&G lends itself to different aesthetic effects and a variety of surface options. The sizes provided here (below left) are for plain Tongue & Groove patterns.

FIND THIS PATTERN IN OUR LUMBER PATTERN BOOK STARTING ON PAGE 06

NAILING PATTERNS

LEGEND

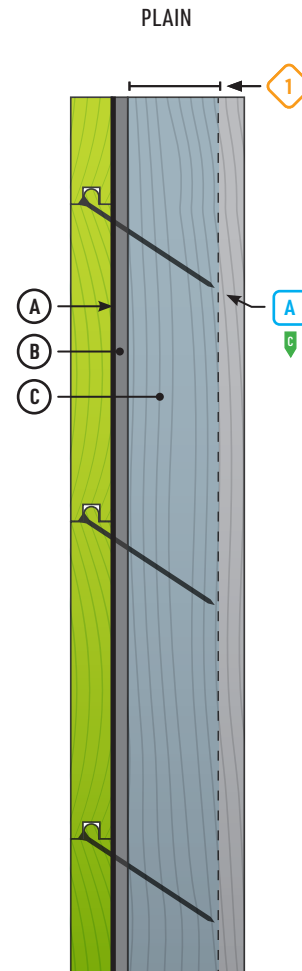
- 1** NAILS MUST PENETRATE 1 1/2" INTO SOLID WOOD.
- 2** USE TWO SIDING OR BOX NAILS PER BEARING 3 - 4" APART.
- A** USE CASING NAIL TO BLIND NAIL T&G PATTERNS. ONE PER BEARING.
- 1** POSITION LOWER NAIL 1" FROM THE BOTTOM.
- A** HOUSE WRAP
- B** SHEATHING
- C** STUD
- S** SIDING
- N** NAIL DEPTH
- N** NAIL

PROFILE VIEW

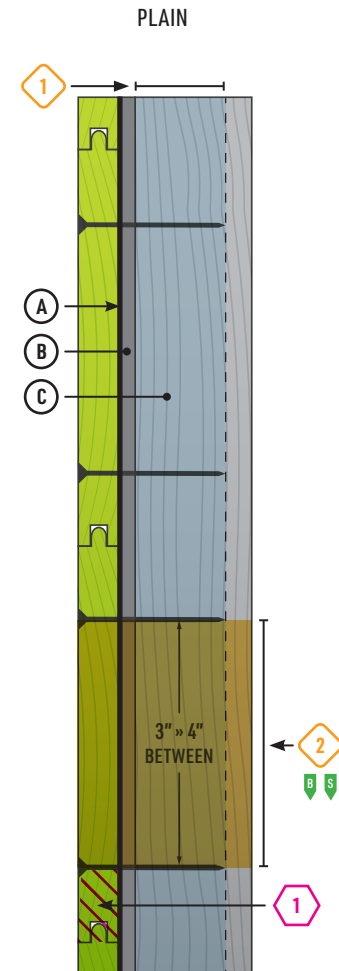
A profile view of the pattern before installation.



NAILING PATTERNS 6" AND NARROWER



NAILING PATTERNS 8" AND WIDER



CONTENT SOURCE INSTALLATION RECOMMENDATIONS & NAILING PATTERNS PROVIDED BY WWPA.